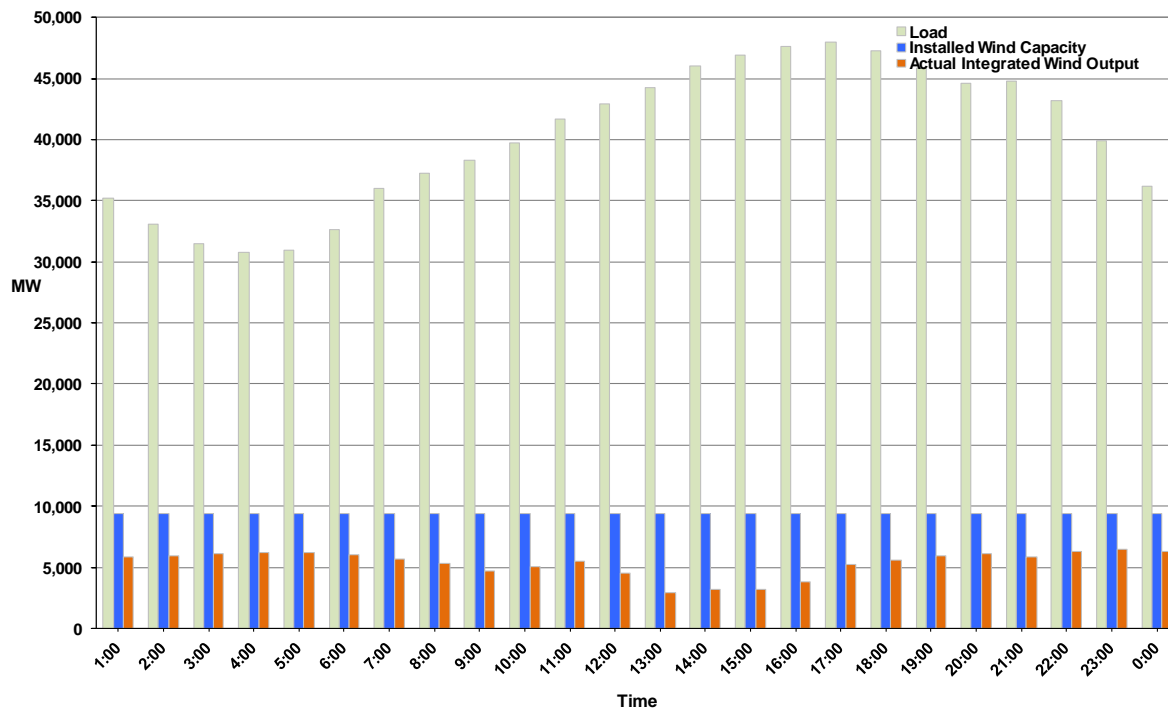




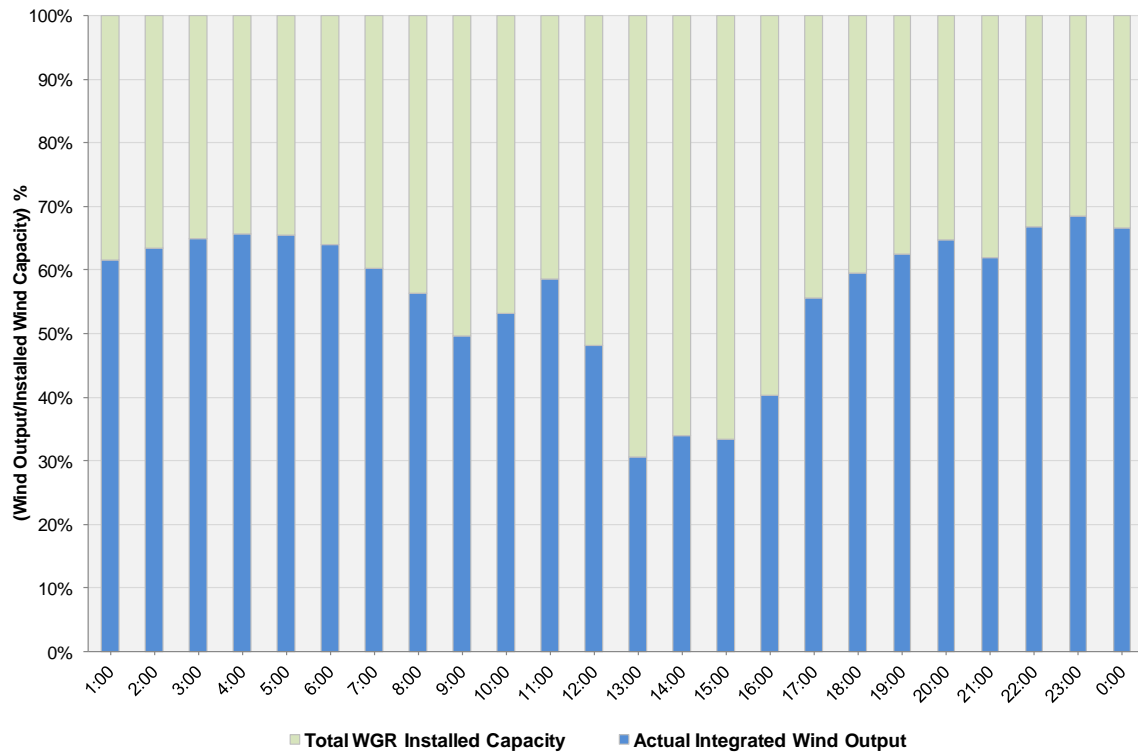
ERCOT Grid Operations Wind Integration Report: 05/10/11

| | |
|----------------------|-----------|
| Peak Load | 48,015 MW |
| Load Peak Hour | 17 |
| Wind Record 12/11/10 | 7,227 MW |
| Max Wind Value | 6,632 MW |
| Wind Peak Time | 21:31:00 |
| Wind Integration % | 15.36% |

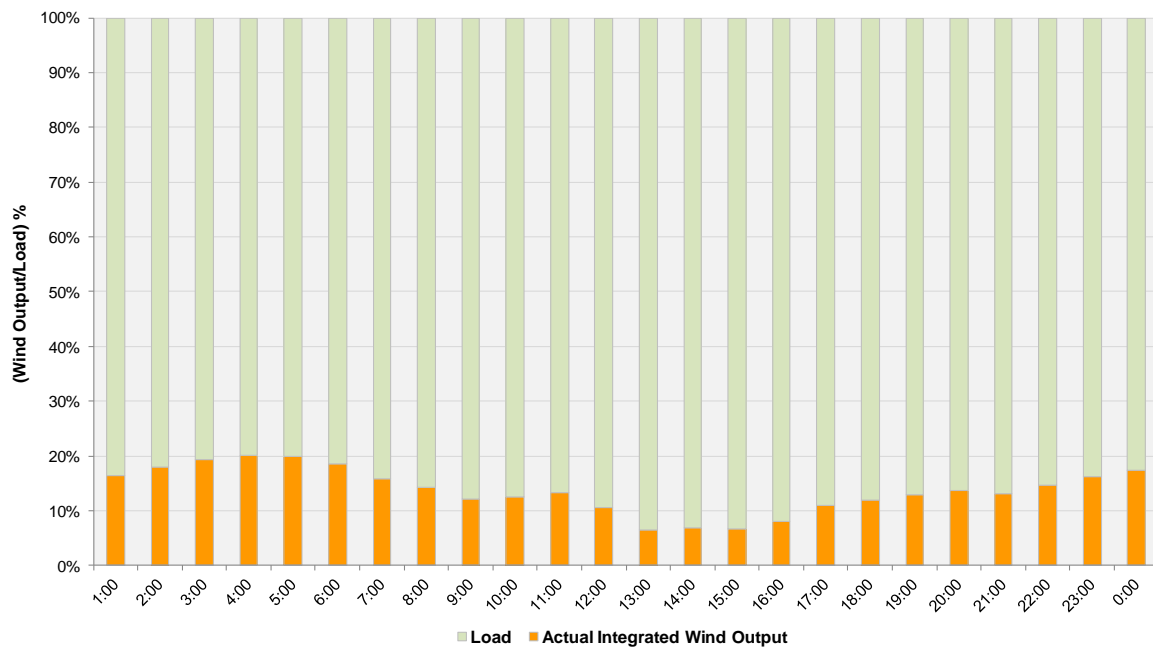
Hourly Average Actual Load vs. Actual Wind Output
05-10-2011



Actual Wind Output as a Percentage of the Total Installed Wind Capacity
05-10-2011



Actual Wind Output as a Percentage of the ERCOT Load
05-10-2011



ERCOT Load vs. Actual Wind Output 5/3/2011 - 5/10/2011

